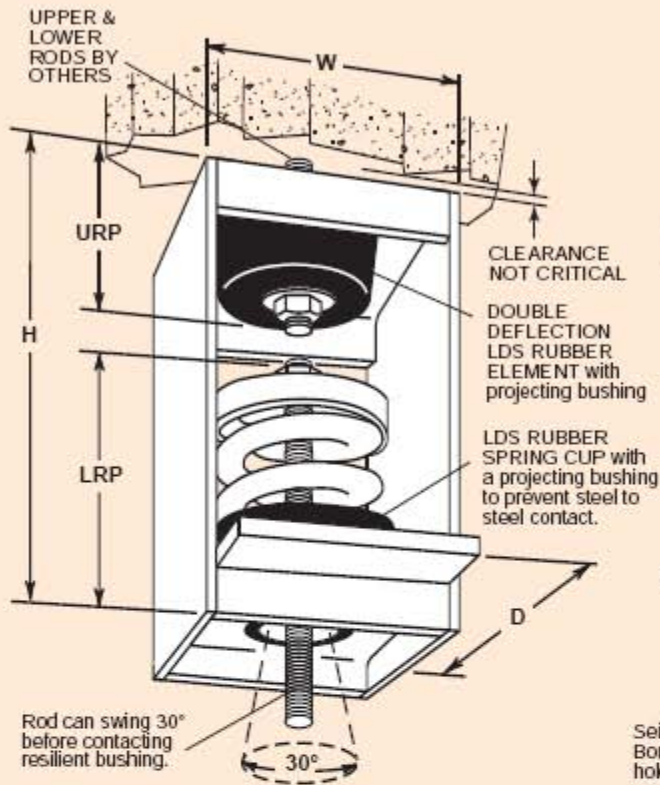


2"(51mm), 3"(76mm), 4"(102mm) & 5"(127mm) DEFLECTION 30° SWING - 100 SERIES SPRING and DOUBLE DEFLECTION LDS HANGERS

30N-100 FOR ROD ATTACHMENT



NOTE -

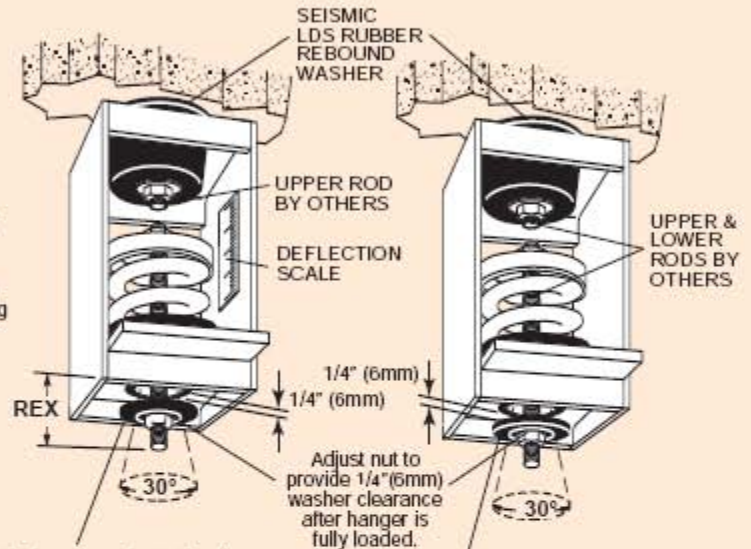
Illustration shows typical construction. Components vary depending on capacity.

SRD is the Smallest (Minimum) Rod Diameter which will maintain spring stability.

PC30N-100

TYPE 30N-100
PRECOMPRESSED &
SEISMIC RESTRAINT

Install with hanger box snug to 1/4" (6mm) Seismic LDS Rubber Washer, so washer is tight to overhead surface. Upper hanger element deflects under load, leaving space on top. Washer cushions upward seismic travel.



Seismic Rebound Steel and Bonded LDS Rubber Washer holds precompression and limits upward seismic motion. Hangers are precompressed to rated load or assigned load as required. Scale indicates deflection.

Seismic Rebound Steel and Bonded LDS Rubber Washer limits upward seismic motion.



Ratings & Dimensions for 2"(51mm) Deflection Spring and Double Deflection LDS Hangers (inches mm)

Type	Size	Rated Capacity		Rated Defl. ¹ (in)(mm)	Spring Constant ¹¹		Spring Defl. LDS- Rubber	Spring Color/ Stripe	Spring Only			LRP- Lower Rod Penetration MRD- Max. Rod Diameter SRD- Min. Rod Diameter			URP- Upper Rod Extension REX- Rod Extension			Vertical G Ratings Com- pression					
		(lbs)	(kg)		(lbs/in)	(kg/mm)			OD	Free Height	D	H	W	LRP	MRD	SRD	REX	URP	Tension	pression			
2" 51mm Defl.	101	125	57	2.90	74	50	0.77	Purple	33/4	95	53/4	146							10.0 ⁺	10.0 ⁺			
	102	200	91	2.90	74	80	1.23	Brown	33/4	95	53/4	146							10.0 ⁺	10.0 ⁺			
	103	310	141	2.90	74	125	1.91	Pink	33/4	95	53/4	146							10.0 ⁺	10.0 ⁺			
	104	500	227	2.90	74	200	3.07	0.40	Green	33/4	95	53/4	146	5	131/2	6	71/2	7/8	5/8	41/2	31/4	10.0 ⁺	10.0 ⁺
	105	740	336	2.80	71	310	4.73	10	Red	33/4	95	53/4	146	127	343	152	191	22	16	114	83	10.0 ⁺	7.2
	106	1050	476	2.50	64	500	7.44		White	33/4	95	57/8	149									8.0	5.1
30N-	107	1400	635	2.40	61	700	10.41	Blue	33/4	95	57/8	149									6.0	3.8	
PC30N-	108	1660	753	2.45	62	810	12.15	0.40	Silver	41/2	114	63/4	171	6	153/8	71/4	11	7/8	5/8	5	31/4	6.8	5.3
	109	2250	1021	2.40	61	1125	16.74	10	Orange	41/2	114	71/2	191	152	391	184	279	22	16	127	83	5.0	3.9
RW30N-	110	3000	1361	2.40	61	1500	22.31	0.40	Gray	5	127	71/2	191	6	16	71/4	111/2	7/8	3/4	5	31/4	4.0	2.9
	111	4000	1814	2.40	61	2000	29.74	10	Tan	5	127	71/2	191	152	406	184	292	22	19	127	83	3.0	2.2
	112	5300	2404	2.40	61	2665	39.41	0.40	Black	51/2	140	81/2	216	7	17	91/4	121/4	11/8	7/8	51/2	31/4	2.7	2.4
	113	7100	3221	2.40	61	3550	52.80	10	Yellow	6	152	83/4	222	178	432	235	311	29	22	140	83	2.0	1.8
	114	9300	4218	2.40	61	4650	69.15	0.40	Blue/Or	63/4	171	10	254	8	22	10	151/2	11/8	1	51/2	61/2	4.1	1.3
115	12600	5715	2.40	61	6300	93.69	10	Blue/Rd	63/4	171	10	254	203	559	254	394	29	25	140	165	3.0	0.95	

All springs have additional travel to solid equal to 50% of Rated Deflection. LDS elements have straight line deflection curves.
¹Includes double deflection LDS element. ¹¹applies to spring only. ⁺10.0 indicates a rating of 10 G's or greater.

