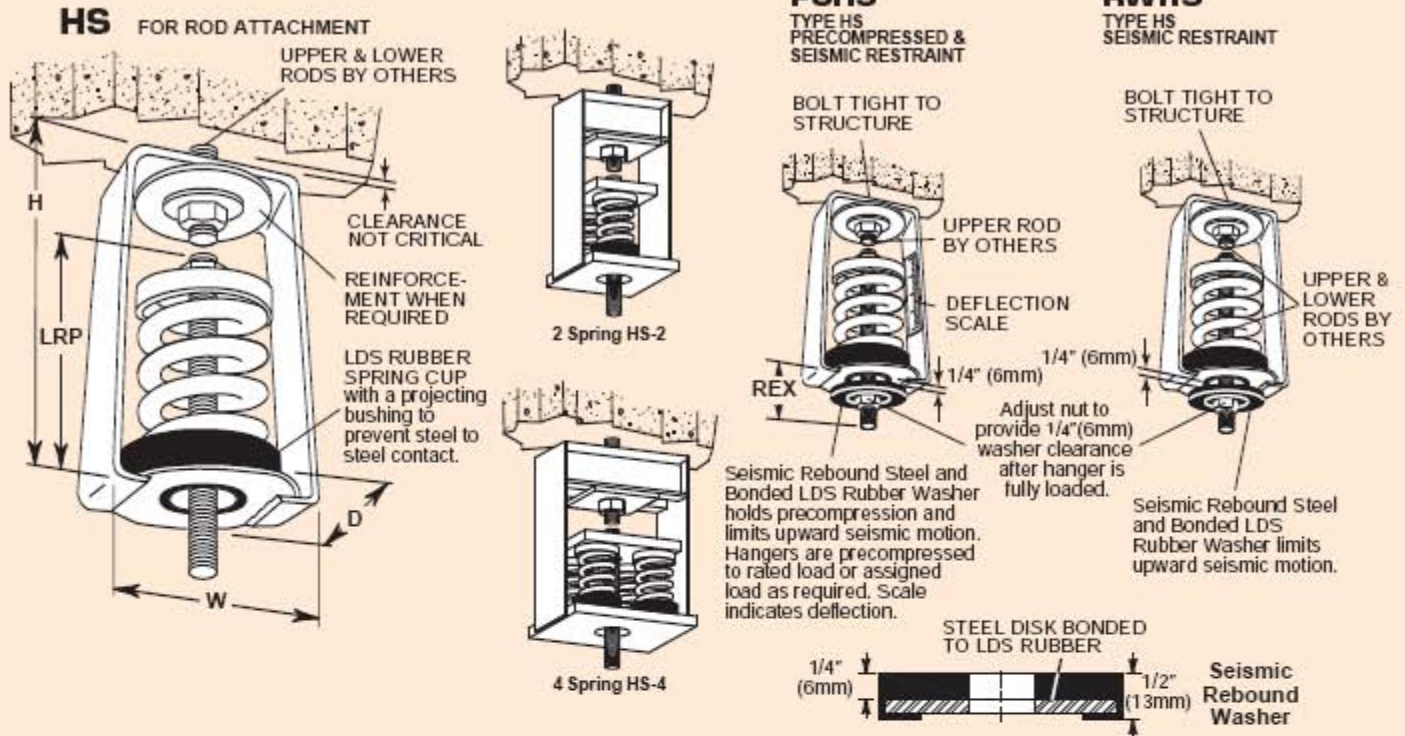


HS, PCHS & RWHS

1"(25mm) Deflection X, A & B SPRING HANGERS



Ratings & Dimensions for 1"(25mm) Deflection Spring Hangers (inches mm)

Type	Size	Rated Capacity (lbs)(kg)	Rated Defl. ¹ (in)(mm)	Spring Constant (lbs/in)(kg/cm)	Spring Color/Stripe	Spring Only Spring Free OD Height	D	H	W	Lower Rod Penetration LRP	Max. Rod Dia. MRD	Rod Extension REX	Vertical 'G' Ratings Tension	Vertical 'G' Ratings Compression
1" 25mm	X-12	12 5	1.25 32	10 0.18	Orange								10.0*	10.0*
	X-23	23 10	1.30 33	18 0.30	Brown								10.0*	10.0*
	X-33	33 15	1.10 28	30 0.54	Copper								10.0*	10.0*
	X-54	54 24	1.20 30	45 0.80	White								10.0*	10.0*
	X-76	76 34	1.02 25	73 1.36	Black	1 1/2 2 1/2	2 1/2	4 1/4	2 7/8	3 1/2	3/8	1 3/4	10.0*	10.0*
	X-113	113 51	1.00 25	113 2.04	Brass	38 64	64	108	73	89	10	44	10.0*	7.6
	X-130	130 59	1.00 25	130 2.36	Purple								10.0*	6.6
	X-175	175 79	1.00 25	175 3.16	Silver								10.0*	4.9
	X-210	210 95	1.00 25	210 3.80	Blue								9.0	4.1
Defl.	A-12	12 5	1.00 25	12 0.20	Copper	1 3/4 1 7/8	2 3/4	5 3/4	3 1/4	3 1/2	5/8	2 1/4	10.0*	10.0*
	A-18	18 8	1.00 25	18 0.32	Gray	44 48	70	146	83	89	16	57	10.0*	10.0*
	A-25	25 11	1.00 25	25 0.44	Orange								10.0*	10.0*
HS-	A-41	41 19	1.18 30	35 0.63	Pink								10.0*	10.0*
	A-56	56 25	1.14 30	49 0.83	Black	1 3/4 2 1/4	2 3/4	5 3/4	3 1/4	4	5/8	2 1/4	10.0*	10.0*
	A-73	73 33	1.06 27	69 1.22	Tan	44 57	70	146	83	102	16	57	10.0*	10.0*
	A-95	95 43	1.01 26	94 1.65	Green								10.0*	10.0*
PCHS-	A-45	45 20	1.60 41	28 0.49	Blue								10.0*	10.0*
	A-75	75 34	1.50 38	50 0.89	Orange								10.0*	10.0*
	A-125	125 57	1.33 34	94 1.68	Brown	1 3/4 3	2 3/4	5 3/4	3 1/4	4	5/8	2 1/2	10.0*	10.0*
	A-200	200 91	1.15 29	174 3.14	Black	44 76	70	146	83	102	16	64	10.0*	10.0*
	A-310	310 141	1.00 25	310 5.64	Yellow								10.0*	7.1
RWHS	A-400	400 181	1.00 25	400 7.24	Green								10.0*	5.5
	A-510	510 231	1.00 25	510 9.24	Red	1 3/4 3 1/8	2 3/4	5 3/4	3 1/4	4	5/8	2 1/2	10.0*	4.3
	A-625	625 283	1.00 25	625 11.32	White	1 3/4 3 3/8	2 3/4	5 3/4	3 1/4	4	5/8	2 1/2	9.0	3.5
RWHS	B-65	65 29	2.10 53	31 0.55	Brown								10.0*	10.0*
	B-85	85 39	2.10 53	40 0.74	White*								10.0*	10.0*
	B-115	115 52	2.00 51	57 1.02	Silver								10.0*	10.0*
	B-150	150 68	2.00 51	75 1.33	Orange	2 3/8 4	4	7 1/4	4 3/4	4 1/4	3/4	2 1/4	10.0*	10.0*
	B-280	280 127	1.60 41	174 3.10	Green	60 102	102	184	121	108	19	57	10.0*	5.4
	B-450	450 204	1.31 33	344 6.18	Red								10.0*	3.3
	B-750	750 340	1.12 28	670 12.14	White								10.0*	2.0
	B-1000	1000 454	1.00 25	1000 18.16	Blue	2 3/8 4	4	7 1/4	4 3/4	4 1/4	3/4	2 1/4	10.0*	1.5

¹All springs have additional travel to solid equal to 50% of the rated deflection.

*10.0 indicates a rating of 10 G's or greater

1"(25mm) DEFLECTION C AND MULTIPLE C SPRING HANGERS

Ratings & Dimensions for 1"(25mm) Deflection Spring Hangers (inches mm)

Type	Size	Rated Capacity		Rated Def. [†]		Spring Constant		Spring Color	Spring Only		Lower Rod Penetration LRP	Max. Rod Dia. MRD	Rod Extension REX	Vertical 'G' Ratings				
		(lbs)	(kg)	(in)	(mm)	(lbs/in)	(kg/cm)		Free OD Height	D				H	W	Tension	Compression	
1" 25mm Defl.	1-1000	1000	454	1.00	25	1000	18.16	Black	27/8	41/8	4	83/4	51/4	5	7/8	21/4	10.0*	3.2
	1-1350	1350	612	1.00	25	1350	24.48	Yellow									8.7	2.4
	1-1750	1750	794	1.00	25	1750	31.76	Black*	6.7	1.8								
	1-2100	2100	953	1.00	25	2100	38.12	Yellow*	5.6	1.5								
	1-2385	2385	1082	1.00	25	2385	43.28	Yellow**	5.0	1.4								
	1-2650	2650	1202	1.00	25	2650	48.08	Red*	4.4	1.2								
1-2935	2935	1331	1.00	25	2935	53.24	Red**	4.0	1.1									
HS-	2-2700	2700	1225	1.00	25	2700	49.00	Yellow	27/8	41/8	9	10	51/4	7	1	41/4	10.0*	3.0
	2-3500	3500	1588	1.00	25	3500	63.52	Black*									10.0*	2.3
	2-4200	4200	1905	1.00	25	4200	76.20	Yellow*	9.8	1.9								
PCHS-	4-5400	5400	2445	1.00	25	5400	97.96	Yellow	27/8	41/8	7	13	87/8	7	11/4	41/2	10.0*	3.5
4-7000	7000	3175	1.00	25	7000	127.00	Black*	8.4									2.7	
RWHS-	4-8400	8400	3810	1.00	25	8400	152.40	Yellow*	73	105	178	330	225	178	32	114	7.0	2.2
RWHS-	4-9540	9540	4327	1.00	25	9540	173.08	Yellow**	27/8	41/8	7	13	87/8	7	11/4	41/2	6.2	2.0
	4-10600	10600	4808	1.00	25	10600	192.32	Red*									5.5	1.8
	4-11740	11740	5325	1.00	25	11740	213.00	Red**	73	105	178	330	225	178	32	114	5.0	1.6

[†]All springs have additional travel to solid equal to 50% of the rated deflection.
*with Red inner spring **with Green inner spring

*10.0 indicates a rating of 10 G's or greater

2"(51mm) DEFLECTION B, B2, C2 AND MULTIPLE C2 SPRING HANGERS

Ratings & Dimensions for 2"(51mm) Deflection Spring Hangers (inches mm)

Type	Size	Rated Capacity		Rated Def. [†]		Spring Constant		Spring Color/Stripe	Spring Only		Lower Rod Penetration LRP	Max. Rod Dia. MRD	Rod Extension REX	Vertical 'G' Ratings				
		(lbs)	(kg)	(in)	(mm)	(lbs/in)	(kg/cm)		Free OD Height	D				H	W	Tension	Compression	
2" 51mm Defl.	B-20	20	9	2.40	61	8	0.15	Tan	4	1/2	4	71/4	43/4	51/8	3/4	21/4	10.0*	10.0*
	B-26	26	12	2.18	55	12	0.22	White/Bl									10.0*	10.0*
	B-35	35	16	2.20	56	16	0.29	Purple	10.0*	10.0*								
	B-50	50	23	2.20	56	24	0.41	White/Rd	10.0*	10.0*								
	B-65	65	29	2.10	53	31	0.55	Brown	102	13	102	184	121	130	19	57	10.0*	10.0*
	B-85	85	39	2.10	53	40	0.74	White/Blk	10.0*	10.0*								
	B-115	115	52	2.00	51	57	1.02	Silver	10.0*	10.0*								
	B-150	150	68	2.00	51	75	1.33	Orange	10.0*	10.0*								
HS-	B2-210	210	95	2.12	54	99	1.76	Silver	41/2	1/2	4	71/4	43/4	51/8	3/4	21/4	10.0*	7.1
	B2-290	290	132	2.00	51	144	2.69	Blue									10.0*	5.2
	B2-450 [‡]	450	204	2.00	51	224	4.00	Tan	114	13	102	184	121	130	19	57	10.0*	3.3
	B2-680 [‡]	680	308	2.00	51	340	6.04	Gray	10.0*	2.2								
	C2-125	125	57	2.50	64	50	0.89	Purple	5	—	4	83/4	51/4	51/4	7/8	21/4	10.0*	10.0*
C2-170	170	77	2.40	61	70	1.26	Brown	10.0*									10.0*	
C2-210	210	95	2.30	58	90	1.64	Red	10.0*	10.0*									
C2-260	260	118	2.20	56	120	2.11	White	10.0*	10.0*									
C2-330	330	150	2.00	51	165	2.94	Black	10.0*	9.6									
C2-460	460	209	2.00	51	230	4.10	Blue	5	—	4	83/4	51/4	51/4	7/8	21/4	10.0*	6.9	
C2-610	610	277	2.00	51	305	5.43	Green	127	—	102	222	133	133	22	57	10.0*	5.2	
PCHS-	C2-880 [‡]	880	399	2.00	51	440	7.82	Gray	5	—	178	330	225	203	32	114	10.0*	3.6
C2-1210 [‡]	1210	549	2.00	51	605	10.76	Silver	9.7									2.6	
C2-1540 [‡]	1540	699	2.00	51	770	13.71	Gray*	7.7									2.1	
C2-1870 [‡]	1870	848	2.00	51	935	16.63	Silver*	6.3									1.7	
RWHS-	2-C2-2420 [‡]	2420	1098	2.00	51	605	21.53	Silver	5	—	9	10	51/4	6	1	41/4	10.0*	4.6
	2-C2-3080 [‡]	3080	1397	2.00	51	770	27.39	Gray*	127	—	229	254	133	152	25	108	10.0*	3.6
	2-C2-3740 [‡]	3740	1696	2.00	51	935	33.25	Silver*	10.0*	3.0								
	4-C2-3520 [‡]	3520	1697	2.00	51	440	31.31	Gray	5	—	7	13	87/8	8	11/4	41/2	10.0*	5.3
4-C2-4840 [‡]	4840	2195	2.00	51	605	43.04	Silver	10.0*									3.9	
4-C2-6160 [‡]	6160	2794	2.00	51	770	54.78	Gray*	9.5									3.1	
4-C2-7480 [‡]	7480	3393	2.00	51	935	66.53	Silver*	7.8									2.5	

[†]All springs without "‡" have additional travel to solid equal to 50% of the rated deflection.
*with Red inner spring

*10.0 indicates a rating of 10 G's or greater

[‡]Published ratings allow minimum 25% additional travel to solid. For a full 50% specified minimum use the following ratings:

Size	Derated Capacity (lbs) (kg)	Defl. (in) (mm)	Size	Derated Capacity (lbs) (kg)	Defl. (in) (mm)	Size	Derated Capacity (lbs) (kg)	Defl. (in) (mm)
B2-450	410 186	1.83 46	C2-1870	1560 708	1.67 42	2-C2-3740	3120 1415	1.67 42
B2-680	565 256	1.66 42	2-C2-1760	1600 726	1.82 46	4-C2-4840	4040 1833	1.67 42
C2-880	800 363	1.82 46	2-C2-2420	2020 916	1.67 42	4-C2-6160	5145 2334	1.67 42
C2-1210	1010 458	1.67 42	2-C2-3080	2570 1166	1.67 42	4-C2-7480	6245 2833	1.67 42
C2-1540	1285 583	1.67 42						