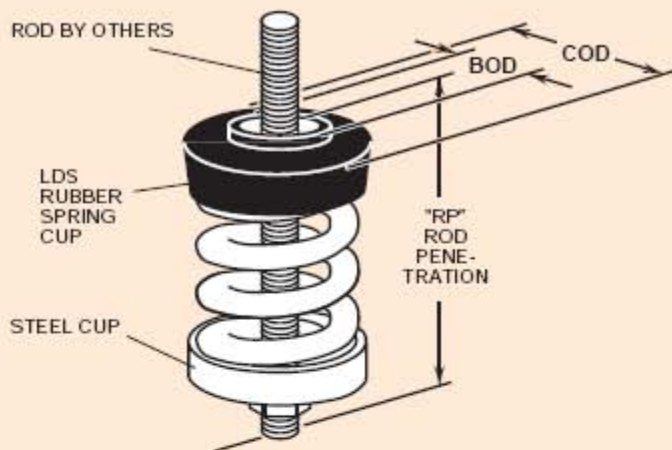
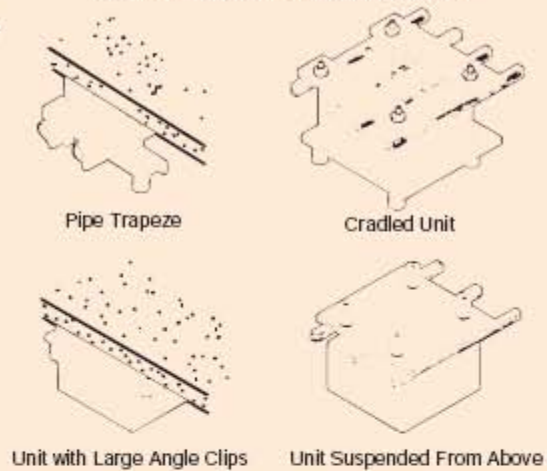


## IM 1"(25mm) DEFLECTION SIMPLE SPRING HANGERS



TYPICAL IM EQUIPMENT INSTALLATION AND PIPE HANGER ARRANGEMENTS



Ratings & Dimensions for 1"(25mm) Deflection Simple Spring Hangers (inches **mm**)

Type	Size	Rated Capacity (lbs) (kg)	Rated Defl. (in) (mm)	Spring Constant (lbs/in) (kg/mm)	Spring Color	Spring Only		Bushing Outside Dia. BOD	Cup Outside Dia. COD	Max. Rod Dia MRD	Rod Penetration RP					
						OD	Free Height									
1" 25mm Defl. IM-	X-12	12 5	1.25 32	10 0.18	Orange	1 1/2 25	2 1/2 64	1 1/8 29	2 51	3/8 10	2 3/4 69					
	X-23	23 10	1.30 33	18 0.30	Brown											
	X-33	33 15	1.10 28	30 0.54	Copper											
	X-54	54 24	1.20 30	45 0.80	White											
	X-76	76 34	1.02 25	73 1.36	Black											
	X-113	113 51	1.00 25	113 2.04	Brass											
	X-130	130 59	1.00 25	130 2.36	Purple											
	X-175	175 79	1.00 25	175 3.16	Silver											
	X-210	210 95	1.00 25	210 3.80	Blue											
	A-12	12 5	1.00 25	12 0.20	Copper	1 3/4 44	1 7/8 48	1 1/4 32	2 1/2 38	3/8 10	2 1/4 57					
	A-18	18 8	1.00 25	18 0.32	Gray											
	A-25	25 11	1.00 25	25 0.44	Orange											
	A-45	45 20	1.60 41	28 0.49	Blue	1 3/4 44	3 76	1 1/4 32	2 1/2 64	1/2 13	3 3/8 86					
	A-75	75 34	1.50 38	50 0.89	Orange											
	A-125	125 57	1.33 34	94 1.68	Brown											
	A-200	200 91	1.15 29	174 3.14	Black											
	A-310	310 141	1.00 25	310 5.64	Yellow											
	A-400	400 181	1.00 25	400 7.24	Green											
	A-510	510 231	1.00 25	510 9.24	Red	1 3/4 44	3 1/8 79	1 1/4 32	2 1/2 64	1/2 13	3 1/2 89					
	A-625	625 283	1.00 25	625 11.32	White	1 3/4 44	3 3/8 86	1 1/4 32	2 1/2 64	1/2 13	3 3/4 95					
	B-65	65 29	2.10 53	31 0.55	Brown	2 3/8 60	4 102	1 7/8 48	3 1/8 79	3/4 19	5 127					
	B-85	85 39	2.10 53	40 0.74	White/Blk											
	B-115	115 52	2.00 51	57 1.02	Silver											
	B-150	150 68	2.00 51	75 1.33	Orange											
B-280	280 127	1.60 41	174 3.10	Green												
B-450	450 204	1.31 33	344 6.18	Red												
B-750	750 340	1.12 28	670 12.14	White												
B-1000	1000 454	1.00 25	1000 18.16	Blue												
B-1250	1250 567	1.00 25	1250 22.68	Gray												
B-1650	1650 748	1.00 25	1650 29.92	Black												
C-1000	1000 454	1.00 25	1000 18.16	Black	2 3/8 60							4 1/8 105	2 3/8 60	3 5/8 92	3/4 19	5 127
C-1350	1350 612	1.00 25	1350 24.48	Yellow												
C-1750	1750 794	1.00 25	1750 31.76	Black*												
C-2100	2100 953	1.00 25	2100 38.12	Yellow**												
C-2385	2385 1082	1.00 25	2385 43.28	Yellow**												
C-2650	2650 1202	1.00 25	2650 48.08	Red*												
C-2935	2935 1331	1.00 25	2935 53.24	Red**												

All springs have additional travel to solid equal to 50% of Rated Deflection.

\*with Red inner spring \*\*with Green inner spring