



ADAM Sp. z o.o.

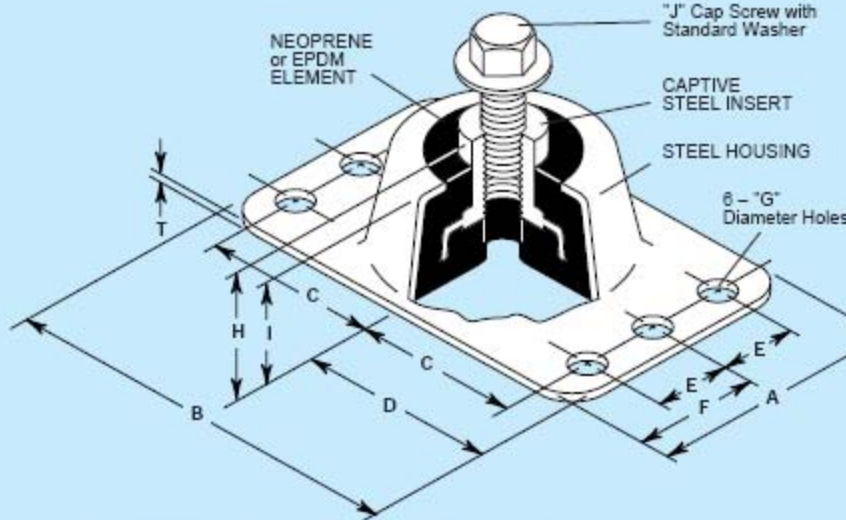
NOISE & VIBRATION CONTROL

Morska 9A biuro@adam.com.pl
 PL 84-230 Rumia adam.com.pl
 tel. / fax. +48 58 / 671 38 35

NEOPRENE MOUNTINGS WITH CAPTIVE STEEL INSERTS FOR SECURING EQUIPMENT TO WALLS, FLOORS OR CEILINGS IN SEISMIC, MOBILE OR STATIONARY INSTALLATIONS

RBA, RCA & RDA

DATA SHEET DS-400-7.1B



TYPE RBA, RCA and RDA DIMENSIONS (inches millimeters)

Type	A	B	C	D	E	F	G	H	I	J	T
RBA	3 76	43/4 121	115/16 49	23/8 60	1 25	11/2 36	7/16 11	17/8 48	11/2 38	1/2-13UNC x 11/4	3/32 2
RCA	33/4 95	61/4 159	21/2 64	31/8 79	11/4 32	17/8 48	9/16 14	17/8 48	11/2 38	5/8 -11UNC x 11/4	3/32 2
RDA	5 127	8 203	31/4 83	4 102	13/4 44	21/2 64	3/4 19	23/8 60	17/8 48	7/8 -9UNC x 11/4	3/16 5

TYPE RBA, RCA and RDA RATINGS

Type	Size (Color Mark)	Duro-meter	COMPRESSION		TENSION		SHEAR		Maximum Horizontal Static G Rating*
			Rated Capacity (lbs kgs)	Rated Defl (in mm)	Rated Capacity (lbs kgs)	Rated Defl (in mm)	Rated Capacity (lbs kgs)	Rated Defl (in mm)	
RBA-	Black	30	250	113	200	91	200	90	13.6
	Green	45	525	238	420	191	420	191	6.5
	White	60	1000	464	800	363	800	363	3.4
RCA-	Green	40	1400	635	1000	454	400	181	2.7
	Red	50	2100	953	1500	680	600	272	1.8
	White	60	3500	1588	2500	1134	1000	454	1.1
RDA-	Green	40	2800	1270	2000	910	900	410	3.3
	Red	50	4200	1910	2900	1320	1300	590	2.2
	White	60	7100	3230	4200	1910	1800	820	1.3

All Rated Capacities are based on proper neoprene loadings without metal to metal contact. Seismic Max. G Ratings are based on metal failure under static seismic loadings as defined in the building codes.

*Horizontal G Ratings are for quick reference only- Use OSHPD Rated Load Curves.

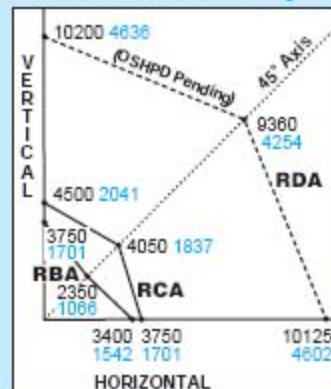
Specification

Captive neoprene mountings shall consist of a steel housing with a captive steel insert embedded in neoprene to prevent contact between the housing and the central threaded insert. Bonded assemblies without mechanical interlocks are not acceptable.

All mountings shall have minimum 1.0 horizontal G ratings and anchorage preapproval "R" numbers from the Office of Statewide Health Planning and Development (OSHPD) in the state of California, attesting to the maximum horizontal and vertical load ratings. All mountings shall have bolts for rigid attachment to the equipment and adequate base bolting provision. Mountings shall have a minimum static deflection of 0.15" (4 mm).

In seismic zones, submittals shall include calculations showing that the intersection of the horizontal and vertical seismic loads fall below the OSHPD approved curves. Anchorages must be designed to meet the applicable building codes. All calculations must be signed by a professional engineer. Mountings shall be type RBA, RCA and RDA as manufactured by Mason Industries, Inc.

OSHPD R-0200
 Rated Load Curves (lbs kgs)



Horizontal, Vertical and 45° plotted Ratings are California OSHPD approved values having the OSHPD Anchorage Preapproval Number R-0200. Testing and calculations were performed to meet OSHPD criteria.

To use approved OSHPD rated load curves: 1) Calculate Vertical and Horizontal Forces on mounting including translations and overturning moments. 2) Plot Horizontal Load vs Vertical Load. The point must fall within the area below the OSHPD curve.