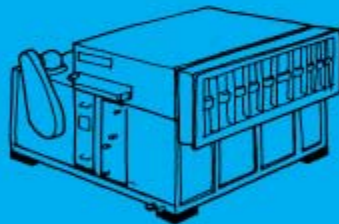
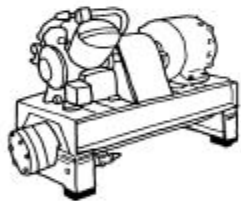


MASON-ADAM Sp. z o.o.

MINI SUPER W PADS



FULL SHEET—
450 x 450 x 10mm
(18" x 18" x 3/8")



MASON MINI SUPER W PADS ARE MOLDED IN—

- **Natural Rubber** for maximum resilience and vibration isolation. Contains anti-oxidants and anti-ozonants to improve aging.
- **Standard Neoprene** for moderate oil resistance.

Standard size 450 x 450 x 10mm (18" x 18" x 3/8") consists of 81 - 50mm (2") modules. The 50mm (2") squares are separated by a thin web that is easily cut to provide evenly dimensioned pads such as 50 x 50mm (2" x 2"), 50 x 100mm (2" x 4"), 100 x 100mm (4" x 4"), 150 x 200mm (6" x 8"), etc. Our Mini Super W pad is one of the thickest, most versatile and efficient pads on the market.

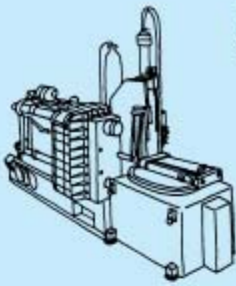
METRIC EQUIVALENTS

450 x 450 x 10mm = 18" x 18" x 3/8"
 50 x 50 x 10mm = 2" x 2" x 3/8"
 50 x 100 x 10mm = 2" x 4" x 3/8"
 100 x 100 x 10mm = 4" x 4" x 3/8"
 150 x 200 x 10mm = 6" x 8" x 3/8"

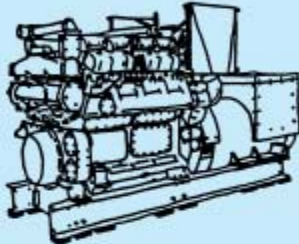
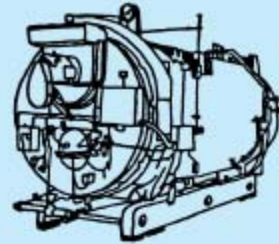


SINGLE MODULE—
50 x 50 x 10mm
(2" x 2" x 3/8")

Pads can be used to reduce noise, high frequency vibration and impact from typical machines as follows:

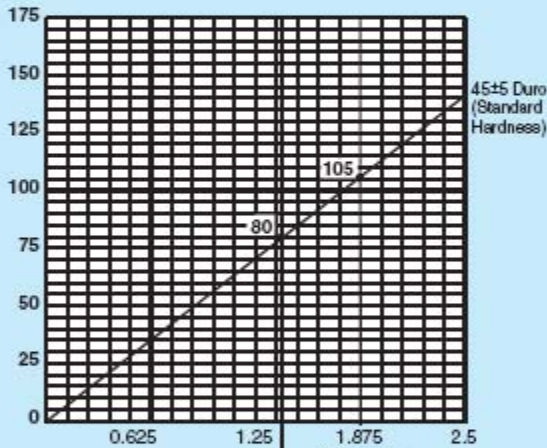


- Chillers
- Compressors
- HVAC Units
- Vent Sets
- Pumps
- Motor Generators
- Transformers
- Diesel Generators
- Punch Presses
- Lathes
- Saws
- Power Presses
- Drill Presses



METRIC
UNITS
LOAD

kgs /
50mm
square

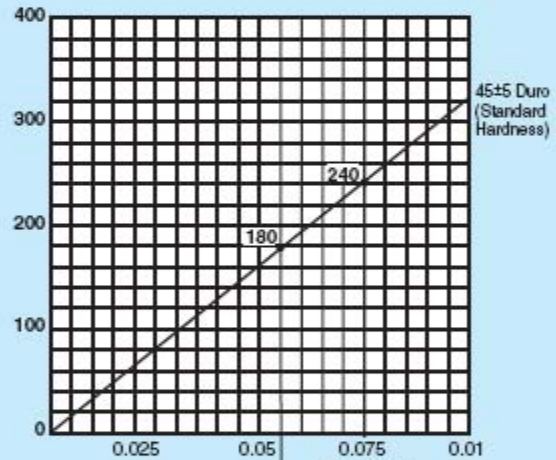


DEFLECTION—
MILLIMETERS

Recommended
Maximum Load
15% Deflection

AMERICAN or
BRITISH UNITS
LOAD

lbs /
2"
square



DEFLECTION—
INCHES

Recommended
Maximum Load
15% Deflection



PADS MAY BE STACKED
WITH 1.6MM (16 GAUGE)
SHIMS BETWEEN LAYERS
FOR INCREASED
DEFLECTION.

Mini Super W Pads should be used in full squares. Select the minimum number of squares required and design pad to the most convenient square or rectangle. The use of additional squares results in more conservative loading.

Metric Units Example—

Load is 5000 kgs. 45 Duro capacity is 80 kgs.
 $5000/80 = 62.5$ squares (minimum).

Pad may be 8 modules x 8 modules (400 x 400mm)
or 7 modules x 10 modules (350 x 500mm)
or 6 modules x 11 modules (300 x 550mm) etc.

British Units Example—

Load is 980 lbs. 45 Duro capacity is 180 lbs.
 $980/180 = 5.44$ squares (Use 6 square modules).

Pad may be 2 modules x 3 modules (4" x 6")
or 1 module x 6 modules (2" x 12")

MINI SUPER W LOAD RATINGS PER SQUARE

DUROMETER	15% DEFLECTION	
	Load per 50x50mm Square (kgs)	Load per 2" x 2" Square (lbs)
Standard 45±5	80	180



ADAM Sp. z o.o.
NOISE & VIBRATION CONTROL

Morska 9A
PL 84-230 Rumia
tel. / fax +48 58 671 38 35

biuro@adam.com.pl
adam.com.pl